

274

696 sq.ft. Living Area

**Actual square footage may vary due to added options, or chosen elevations.*



ClassicHomes.com

preamble COLLECTION



Elevation A | *Standard*



Elevation B | *Optional*

NOTES

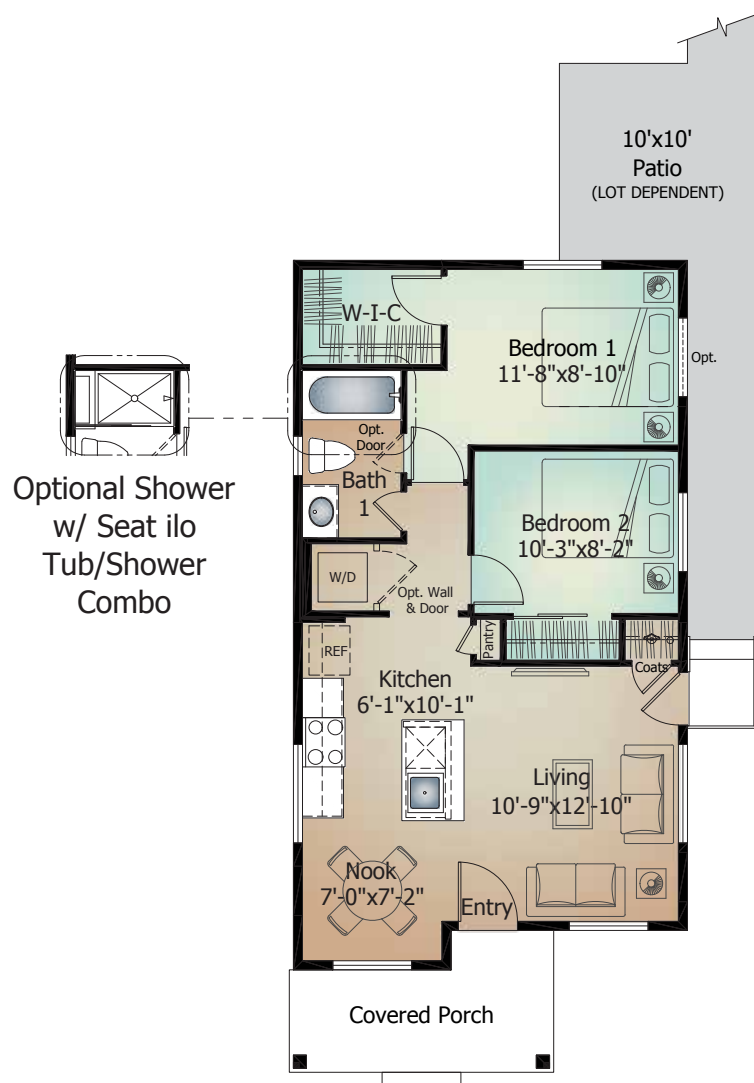
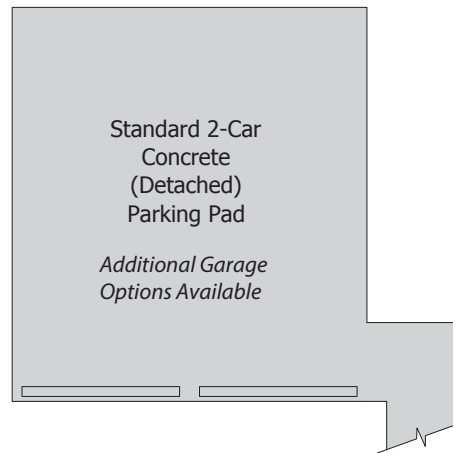
Artist's conception. All plans, landscaping, features and specifications are subject to change without notification. Measurements are approximate and may vary. Homes are built to blueprint specifications which must be referenced for specific measurements. This is a marketing document and not part of your home purchase contract.



July 09, 2024

274 Main Level

A' Elevation shown



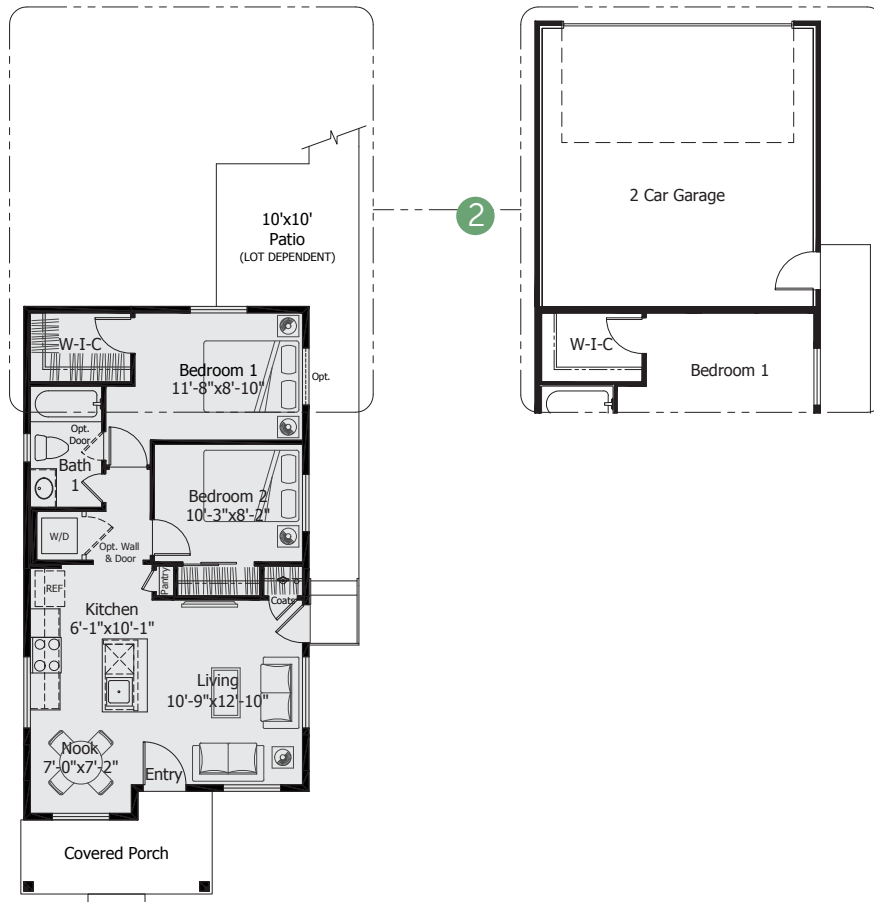
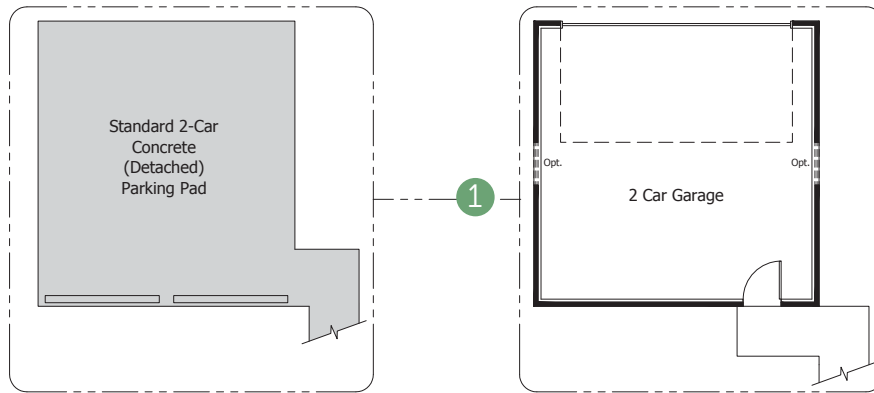
274 Garage Options



A' Elevation shown

The 274 includes a detached 2-car concrete parking pad.
Optional garage configurations available in lieu of parking pad include:

- 1 Detached 2-Car Garage
- 2 Attached 2-Car Garage
No Direct Access to House Interior.



Artist's conception. All plans, landscaping, features and specifications are subject to change without notification. Measurements are approximate and may vary. Homes are built to blueprint specifications which must be referenced for specific measurements. This is a marketing document and not part of your home purchase contract.



July 9, 2024