

273

691 sq.ft. Living Area

**Actual square footage may vary due to added options, or chosen elevations.*



ClassicHomes.com

preamble COLLECTION



Elevation A | *Standard*



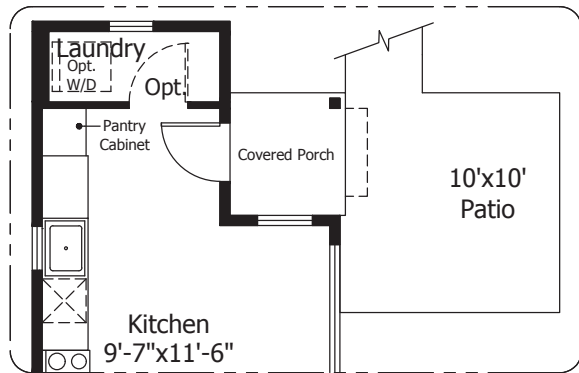
Elevation B | *Optional*

NOTES

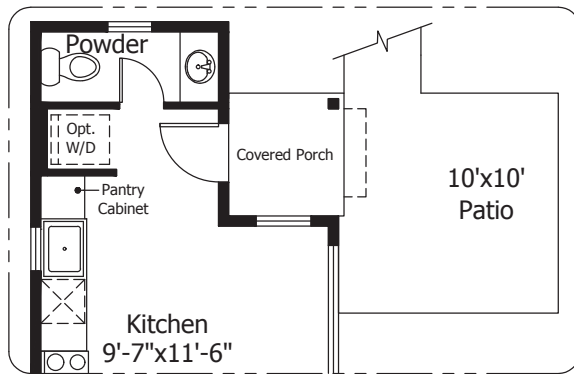


273 Main Level

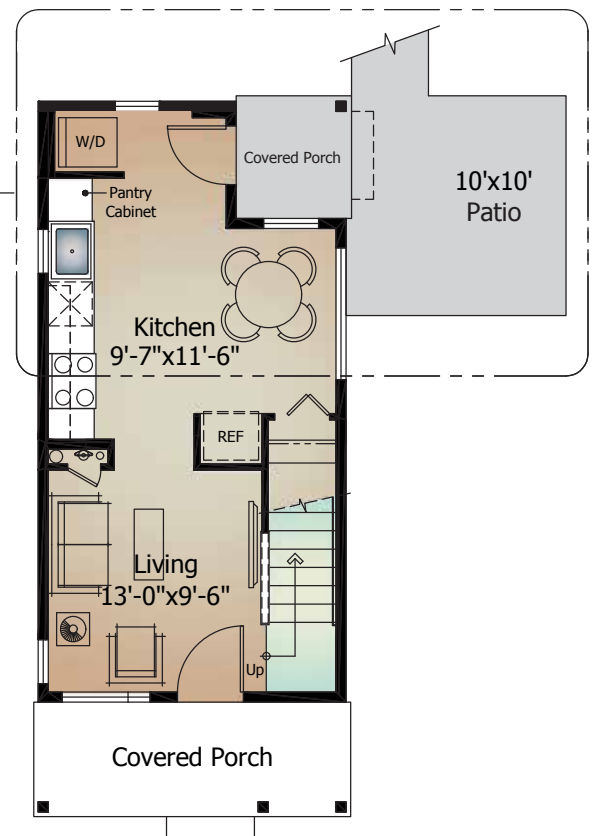
'A' Elevation shown



Optional Expansion w/ Laundry Room and Expanded Kitchen Layout

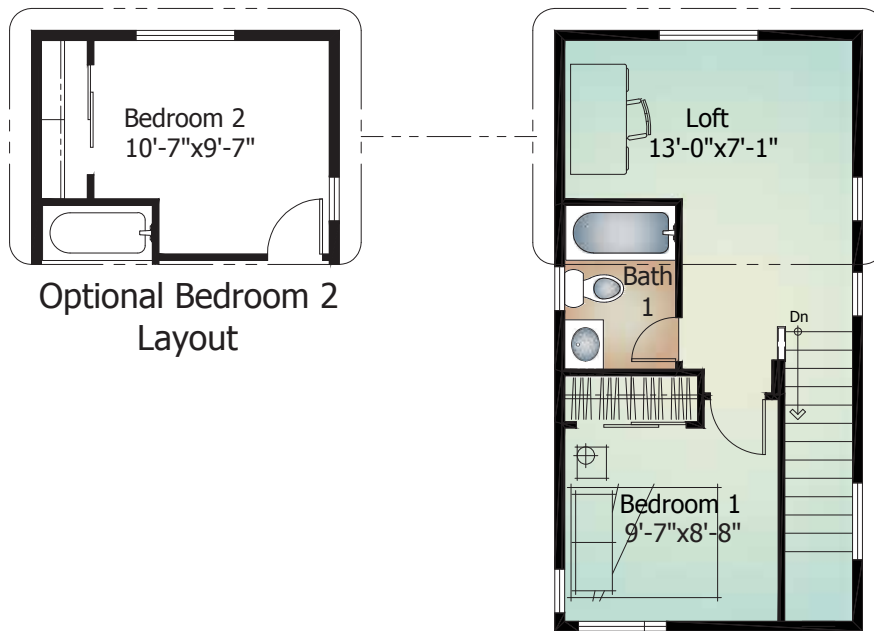


Optional Expansion w/ Powder Room Layout



273 Upper Level

'A' Elevation shown



273 Garage Options



'A' Elevation shown

The 273 includes a detached 2-car concrete parking pad. Optional garage configurations available in lieu of standard 2-car parking pad include:

- 1 Detached 2-Car Garage
- 2 Attached 2-Car Garage
No Direct Access to House Interior.
- 3 Attached 2-Car Garage & Optional Expansions w/ Laundry Room and Expanded Kitchen
No Direct Access to House Interior.
- 4 Optional Attached 2-Car Garage & Optional Expansion w/ Powder Room Layout
No Direct Access to House Interior.

