



Classic Homes / The Daybreak

THE HOME

Timeless Look of Elegance

The Daybreak is one of Classic Homes' newest ranch plans. It offers up to 4,294 square feet of spacious living space. As you enter the Daybreak, the first thing you'll notice is the open, family-friendly design, where the open-concept kitchen and large island, dining room, and great room come together flawlessly. You'll find a covered patio right off the dining nook, allowing families to be just footsteps away from enjoying backyard living. The main-level master is as relaxing and private as it is functional with a spacious walk-in shower, separate vanities, and large walk-in closet adjacent to the laundry room. The main level also includes the choice of a second bedroom and full bath or the optional study just off the foyer of the home. The finished basement is the perfect activity center for larger families with plenty of room for game tables or craft areas, a large wet bar, ample seating areas, and the opportunity for up to three additional bedrooms, plus two full bathrooms. The Daybreak provides tremendous space to comfortably accommodate and entertain family and guests. Two-car and three-car garage options are available with this new ranch plan.

THE BUILDER

Classic Homes has been a leading local builder in the Pikes Peak region since 1989. For 10 consecutive years, we have held the prestigious designation of Colorado Springs' Best Home Builder by readers of The Gazette and the Colorado Springs Business Journal. Our reputation is a testament to our sincere and unwavering belief that quality, value and customer satisfaction must remain at the forefront in the process of delivering a home to our customers. Our selection of building materials, trade partners, and the dedication of our employees is driven by Classic's mission and value statements and the knowledge that we are not merely building homes, but that we are also building communities and creating new friends and neighbors in the process.

As you tour our 2017 Parade homes, we invite you to look carefully at the craftsmanship and detail that our team of professionals builds into each and every home.

THE INTERIOR DESIGN

Classic Homes, in collaboration with Kimberly Timmons Interiors, presents an interior design in the brand new Daybreak floor plan that begins with a classic neutral color palette of blacks and whites. Take this timeless look of elegance and add shades of emerald green layered with caramel furniture pieces and you'll discover depth in every room. Rich fabrics coupled with warm, rustic woods produces a casual contemporary backdrop for families of all shapes

THE DAYBREAK



#11

2312 Pelican Bay
Monument, CO 80132

SQUARE FOOTAGE

FINISHED: 4,205 TOTAL: 4,294

BEDROOMS: 6 BATHROOMS: 4

SELLING PRICE: \$590,342

HOME DESIGN: Classic Homes

LANDSCAPE: All American Landscaping

INTERIOR DESIGN: Kimberly Timmons Interiors

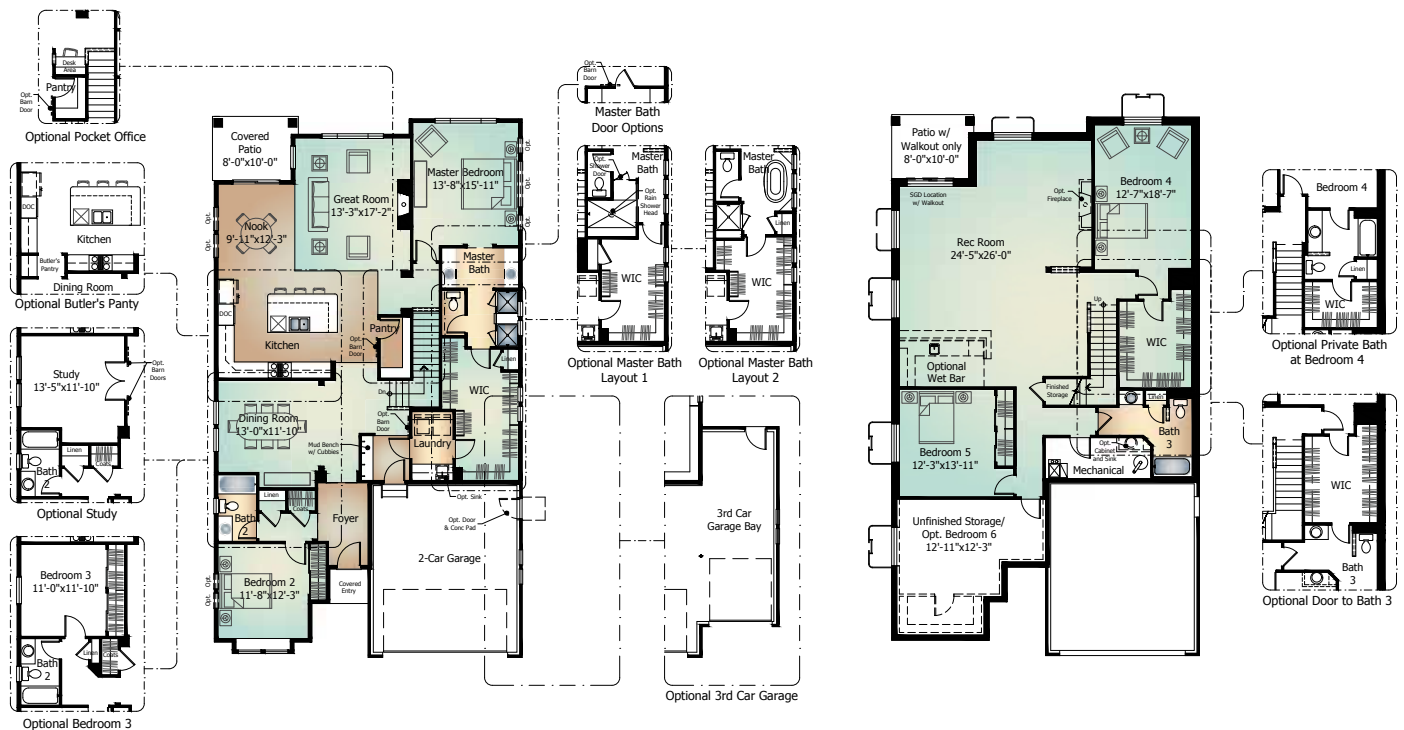
TRADE PARTNERS

- | | | |
|-------------------------------------|----------------------------|------------------------------------|
| A Ramirez Construction | H&H Construction | Safety Rails of Colorado |
| All American Maintenance | Home Builders Services | Scheffe's Roofing & Gutter Service |
| Ankmar Door | HomeRun Electronics | Split Rail Fence Company |
| Barton Supply | J L Siding | The Woodshed |
| Builders Appliance | J.D. Concrete | United Site Services |
| Builders Custom Counter | J2D Electric | USI Powers Insulation |
| Builders First Source | Kampp-L Enterprise | Valley Stucco |
| CLNGM | Kent Glass | Western Drain |
| Cornella Brothers | Kimberly Timmons Interiors | Western Fireplace Supply |
| Dozier Plumbing | K-Rand Painting | |
| Elite Drywall Products and Services | Krohn's Covering | |
| Entech Engineering | Meridian Sky | |
| Environmental Materials | Norcraft Companies | |
| Guereca's Trimmers | Peak Lighting | |
| Guys Floor Service | Planet Granite | |
| | Precision Enterprises | |
| | Regional Heating & A/C | |



(719) 419-8232 | ClassicHomes.com

FLOOR PLANS



MAIN LEVEL

BASEMENT LEVEL