



## Classic Homes / The Celebration

### THE HOME

*Timeless and Classic*

The Celebration is one of Classic Homes' newest ranch plans. It offers 3,220 square feet of family-style living space with an open floor plan concept, where the kitchen, coffee bar, dining nook and great room come together in true harmony. Ample seating areas and the large kitchen island create the ideal setting for family celebrations and gatherings. The wall of windows along the family room, with a sliding glass door for easy access to the backyard, makes indoor/outdoor entertaining a breeze.

Whether you're looking for your first home or your last, the flow of this floor plan is as refreshing as it is smart. The main-level master suite is truly an owner's retreat with its large walk-in closet, barn door to the master bathroom, and plenty of room to relax. The main level also includes a second bedroom and full bath, conveying a thoughtful approach to main-level living. The family-friendly finished basement showcases a spacious recreation room with built-in wet bar. Two additional bedrooms provide a substantial amount of space to comfortably accommodate and entertain family and friends, while still offering privacy for extended-stay guests. The Celebration comes with 2.5- and 3-car tandem garages.

### THE BUILDER

Classic Homes has been a leading local builder in the Pikes Peak region since 1989. For 10 consecutive years, we have held the prestigious designation of Colorado Springs' Best Home Builder by readers of The Gazette and the Colorado Springs Business Journal. Our reputation is a testament to our sincere and unwavering belief that quality, value and customer satisfaction must remain at the forefront in the process of delivering a home to our customers. Our selection of building materials, our choice of trade partners, and the dedication of our employees is driven by Classic's mission and value statements and the knowledge that we are not merely building homes, but that we are also building communities and creating new friends and neighbors in the process.

As you tour our 2017 Parade homes, we invite you to look carefully at the craftsmanship and detail that our team of professionals builds into each and every home.

### THE INTERIOR DESIGN

The design talent of Classic Homes and Cassidy Design come together perfectly to enhance the unique architectural details of The Celebration by creating a smooth flow of color and texture to guide you from one living space to another in this new Classic ranch plan. The selection of classic carpet, tiles, and flooring finishes, alongside modern accents add harmony to the open flexible interior of this home. The

# THE CELEBRATION



#4

8584 Antero Peak Drive  
Colorado Springs, CO 80927

## SQUARE FOOTAGE

**FINISHED: 3,094 TOTAL: 3,220**

**BEDROOMS: 4 BATHROOMS: 3**

**SELLING PRICE: \$465,747**

**HOME DESIGN:** Classic Homes

**LANDSCAPE:** All American Landscaping

**INTERIOR DESIGN:** Cassidy Interior Design

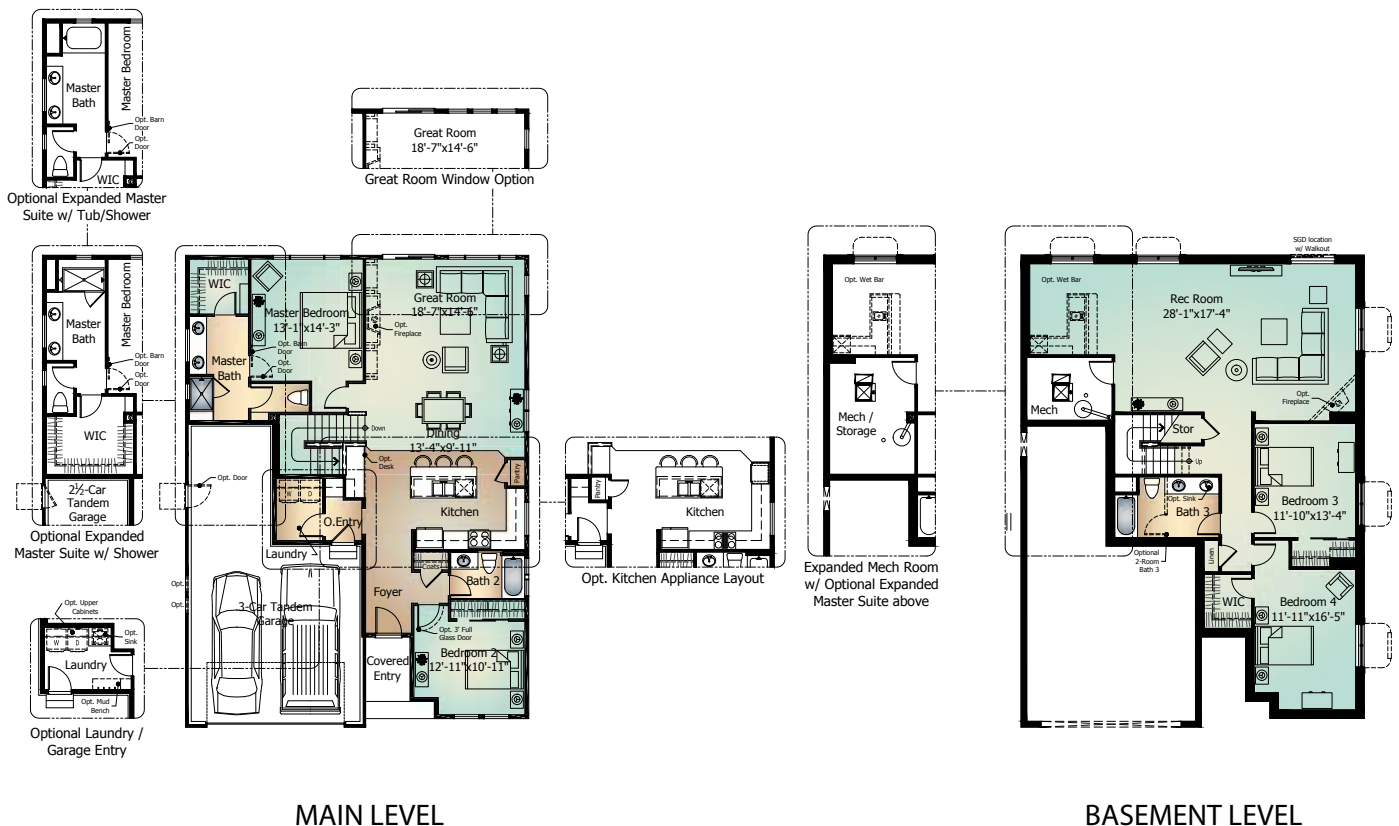
## TRADE PARTNERS

- |                          |                          |                                    |
|--------------------------|--------------------------|------------------------------------|
| Advance Concrete         | G.E. Appliances          | Scheffe's Roofing & Gutter Service |
| All American Maintenance | Guys Floor Service       | Split Rail Fence Company           |
| Ankmar Door              | Home Builders Services   | Stairs Unlimited                   |
| Barton Supply            | HomeRun Electronics      | The Cleaning Team                  |
| BMC Building Materials   | J L Siding               | The Woodshed                       |
| Builders Custom Counter  | J.D. Concrete            | United Site Services               |
| Builders First Source    | J2D Electric             | USI Powers Insulation              |
| Cassidy Design           | Kent Glass               | Valley Stucco                      |
| Christensen Construction | Krohn's Covering         | Western Drain                      |
| Cornella Brothers        | L R Framing              | Western Fireplace Supply           |
| Dozier Plumbing          | Norcraft Companies       |                                    |
| El Paso Drywall          | Peak Lighting            |                                    |
| Entech Engineering       | Planet Granite           |                                    |
| Environmental Materials  | Precision Plumbing       |                                    |
| Evergreen Painting       | Regional Heating & A/C   |                                    |
|                          | Ross Studios             |                                    |
|                          | Safety Rails of Colorado |                                    |



(719) 452-8696 | ClassicHomes.com

## FLOOR PLANS



MAIN LEVEL

BASEMENT LEVEL